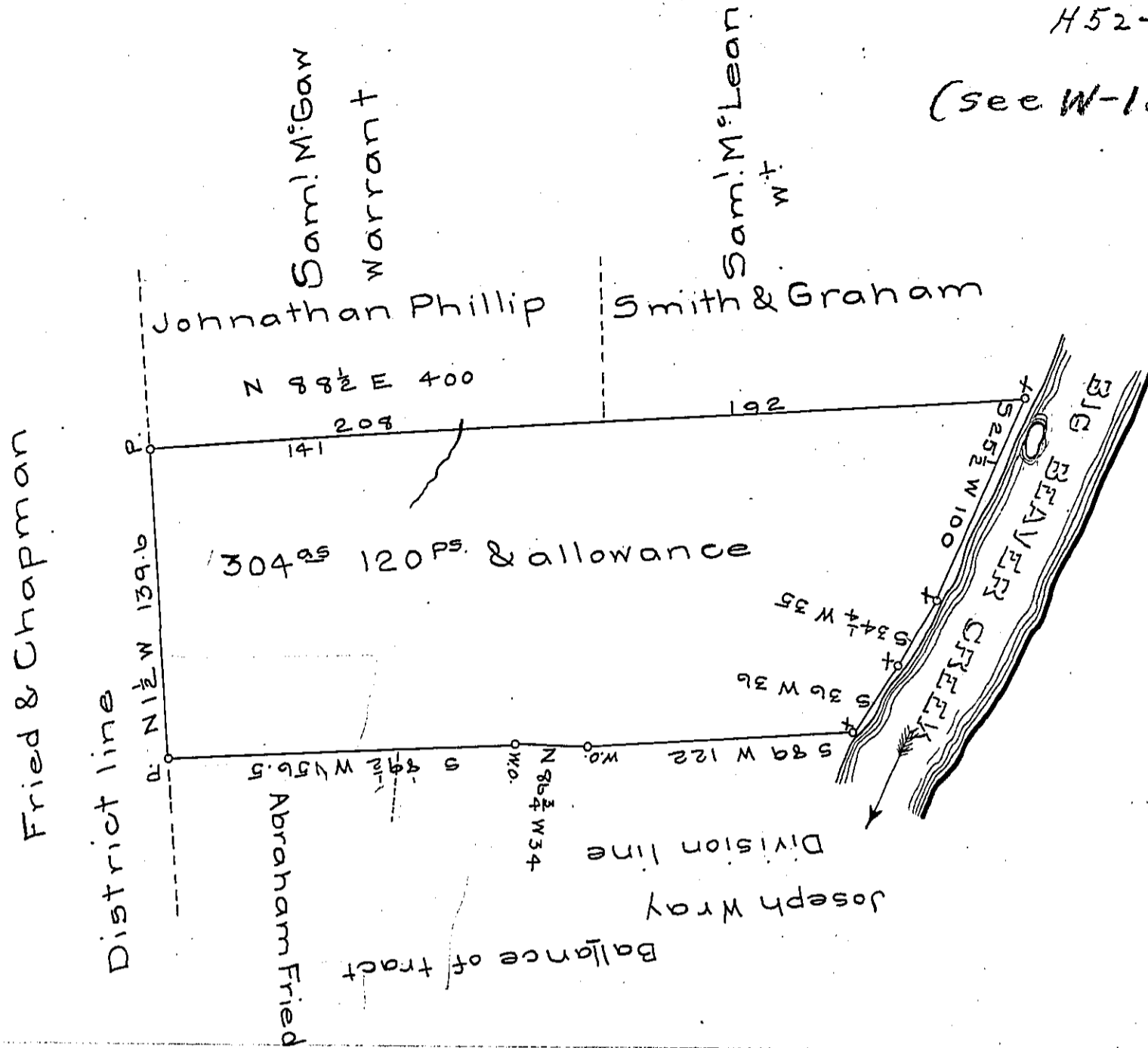


(see W-188)



The above draught represents the resurvey of part of a tract of land situate in Big Beaver township Beaver county surveyed in pursuance of a warrant granted to John M^cCreay for 400 acres dated the 14th day of April 1792. That part resurveyed contains 304 acres and 120 perches and allowance of 6 per cent. Resurveyed May 19th AD. 1853.

Azariah Wynn C.S.

To the Hon J. Porter Brawley
Surveyor General Pa.

IN TESTIMONY that the above is a copy of the original remaining on file in the Department of Internal Affairs of Pennsylvania, made conformably to an Act of Assembly approved the 16th day of February, 1833, I have hereunto set my Hand and caused the Seal of said Department to be affixed at Harrisburg, this twenty-fifth day of April 1906

Lucas B. Brown
Secretary of Internal Affairs.